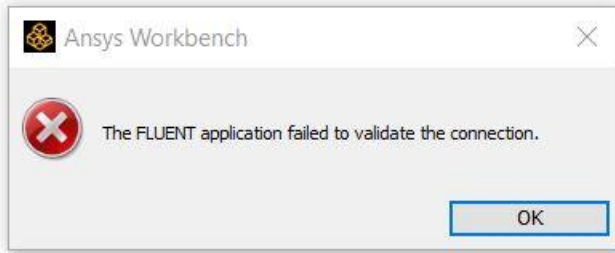


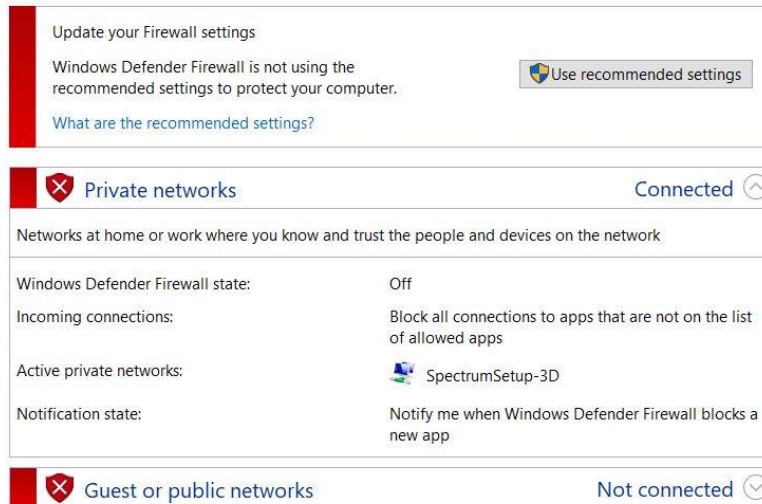
When I try to start ANSYS Fluent I get the following error. I am running Ansys2021R2 student.



- I have tried all of the following steps:
- **Uninstalling and reinstalling the software**
- **Turning off defender firewall**

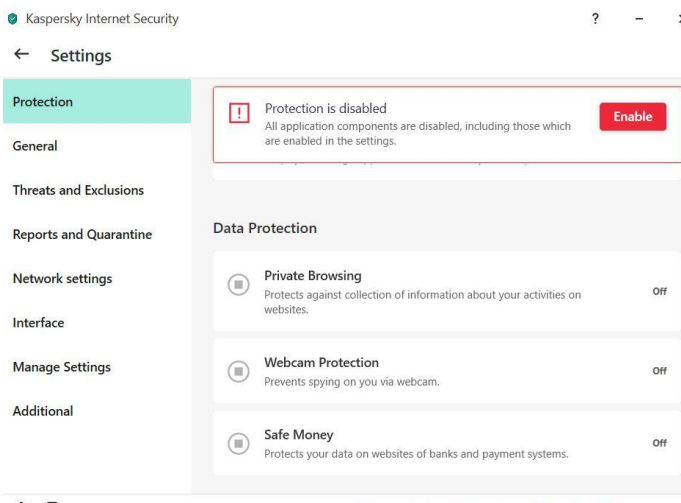
[Help protect your PC with Windows Defender Firewall](#)

Windows Defender Firewall can help prevent hackers or malicious software from gaining access to your PC through the Internet or a network.

A screenshot of the Windows Defender Firewall settings window. The "Update your Firewall settings" section shows that the firewall is not using recommended settings. Below, the "Private networks" section is expanded, showing the firewall state is "Off" and listing active private networks like "SpectrumSetup-3D". The "Guest or public networks" section is collapsed and shows "Not connected".

| | |
|---|--|
| Update your Firewall settings | |
| Windows Defender Firewall is not using the recommended settings to protect your computer. | Use recommended settings |
| What are the recommended settings? | |
| Private networks Connected | |
| Networks at home or work where you know and trust the people and devices on the network | |
| Windows Defender Firewall state: | Off |
| Incoming connections: | Block all connections to apps that are not on the list of allowed apps |
| Active private networks: | SpectrumSetup-3D |
| Notification state: | Notify me when Windows Defender Firewall blocks a new app |
| Guest or public networks Not connected | |

- **Turning off Kaspersky firewall**

A screenshot of the Kaspersky Internet Security settings window. The "Protection" section is selected, and a notification states "Protection is disabled". The "Data Protection" section is expanded, showing settings for "Private Browsing", "Webcam Protection", and "Safe Money", all of which are currently turned "Off".

Kaspersky Internet Security

← Settings

Protection

Protection is disabled
All application components are disabled, including those which are enabled in the settings. [Enable](#)

Data Protection

| | | |
|--|---|-----|
| <input type="checkbox"/> Private Browsing | Protects against collection of information about your activities on websites. | Off |
| <input type="checkbox"/> Webcam Protection | Prevents spying on you via webcam. | Off |
| <input type="checkbox"/> Safe Money | Protects your data on websites of banks and payment systems. | Off |

- **Changed edge to internet explorer**

Default browser

Make Microsoft Edge your default browser Make default

Internet Explorer compatibility

Let Internet Explorer open sites in Microsoft Edge Never

When browsing in Internet Explorer you can choose to automatically open sites in Microsoft Edge

Allow sites to be reloaded in Internet Explorer mode Allow

When browsing in Microsoft Edge, if a site requires Internet Explorer for compatibility, you can choose to reload it in Internet Explorer mode

Internet Explorer mode pages Add

These pages will open in Internet Explorer mode for 30 days from the date you add the page. No pages have been added to the Internet Explorer mode list yet.

- **Changed MPI type on start up**

Fluent Launcher 2021 R2 (Setting Edit Unity)

Fluent Launcher **Ansys**

Simulate a wide range of steady and transient industrial applications using the general-purpose setup, solve, and post-processing capabilities of ANSYS Fluent including advanced physics models for multiphase, combustion, electrochemistry, and more.

Dimension

2D

3D

Options

Double Precision

Display Mesh After Reading

Do not show this panel again

Load ACT

Parallel (Local Machine)

Solver Processes

Solver GPGPUs per Machine

General Options Parallel Settings Remote Scheduler Environment

Interconnects Select IP Interface

default

MPI Types

mssmpi

Run Types

Shared Memory On Local Machine

- **Open Fluent standalone using File Explorer**
 - **Program opens then closes**
- **Results of Set command**

```
C:\Users\Daniel Flanigan>set
ALLUSERSPROFILE=C:\ProgramData
ANSYS212_DIR=C:\Program Files\ANSYS Inc\ANSYS Student\v212\ANSYS
APPDATA=C:\Users\Daniel Flanigan\AppData\Roaming
AWP_LOCALE212=en-us
AWP_ROOT212=C:\Program Files\ANSYS Inc\ANSYS Student\v212
CADOE_LIBDIR212=C:\Program Files\ANSYS Inc\ANSYS Student\v212\CommonFiles\Language\en-us
CommonProgramFiles=C:\Program Files\Common Files
```

CommonProgramFiles(x86)=C:\Program Files (x86)\Common Files
CommonProgramW6432=C:\Program Files\Common Files
COMPUTERNAME=LAPTOP-DLL8LFO9
ComSpec=C:\WINDOWS\system32\cmd.exe
configsetroot=C:\WINDOWS\ConfigSetRoot
DriverData=C:\Windows\System32\Drivers\DriverData
HOMEDRIVE=C:
HOMEPATH=\Users\Daniel Flanigan
LOCALAPPDATA=C:\Users\Daniel Flanigan\AppData\Local
LOGONSERVER=\\LAPTOP-DLL8LFO9
LSTC_LICENSE=Ansys
NUMBER_OF_PROCESSORS=8
OneDrive=C:\Users\Daniel Flanigan\OneDrive
OneDriveConsumer=C:\Users\Daniel Flanigan\OneDrive
OS=Windows_NT
Path=C:\Program Files (x86)\NVIDIA Corporation\PhysX\Common;C:\Program Files\Intel\iCLS
Client\;C:\WINDOWS\system32;C:\WINDOWS;C:\WINDOWS\System32\Wbem;C:\WINDOWS\System32
\WindowsPowerShell\v1.0\;C:\Program Files (x86)\Windows Kits\8.1\Windows Performance
Toolkit\;C:\WINDOWS\System32\OpenSSH\;C:\Program Files\MATLAB\R2018b\bin;C:\Program
Files\Intel\WiFi\bin\;C:\Program Files\Common Files\Intel\WirelessCommon\;C:\Program Files
(x86)\Intel\Intel® Management Engine Components\DAL;C:\Program Files\Intel\Intel® Management
Engine Components\DAL;C:\Users\Daniel Flanigan\AppData\Local\Microsoft\WindowsApps;C:\Program
Files\Intel\WiFi\bin\;C:\Program Files\Common Files\Intel\WirelessCommon\;C:\Users\Daniel
Flanigan\AppData\Local\Programs\Microsoft VS Code\bin;
PATHEXT=.COM;.EXE;.BAT;.CMD;.VBS;.VBE;.JS;.JSE;.WSF;.WSH;.MSC
PROCESSOR_ARCHITECTURE=AMD64
PROCESSOR_IDENTIFIER=Intel64 Family 6 Model 158 Stepping 9, GenuineIntel
PROCESSOR_LEVEL=6
PROCESSOR_REVISION=9e09
ProgramData=C:\ProgramData
ProgramFiles=C:\Program Files
ProgramFiles(x86)=C:\Program Files (x86)
ProgramW6432=C:\Program Files
PROMPT=\$P\$G
PSModulePath=C:\Program
Files\WindowsPowerShell\Modules;C:\WINDOWS\system32\WindowsPowerShell\v1.0\Modules
PUBLIC=C:\Users\Public
P_SCHEMA=C:\Program Files\ANSYS Inc\ANSYS Student\v212\AISOL\CADIntegration\Parasolid\Pschema
SESSIONNAME=Console
SW_SIM_HYDRA=C:\Program Files\Common Files\SolidWorks Shared\Simulation Worker Agent\
SW_SIM_MPIT=INTELMPI
SW_SIM_TEMP=C:\ProgramData\SOLIDWORKS\SW_net_sim_temp\
SystemDrive=C:
SystemRoot=C:\WINDOWS

TEMP=C:\Users\DANIEL~1\AppData\Local\Temp
TMP=C:\Users\DANIEL~1\AppData\Local\Temp
TVT=C:\Program Files (x86)\Lenovo
UGII_3DCONNEXION_DIR=C:\Program Files\3Dconnexion\3DxWare\3DxNX64\ugii_dir\
UGII_3DCONNEXION_DIR32=C:\Program Files\3Dconnexion\3DxWare\3DxNX64\ugii_dir32\
USERDOMAIN=LAPTOP-DLL8LFO9
USERDOMAIN_ROAMINGPROFILE=LAPTOP-DLL8LFO9
USERNAME=Daniel Flanigan
USERPROFILE=C:\Users\Daniel Flanigan
windir=C:\WINDOWS
ZES_ENABLE_SYSMAN=1

- **Checked System32 to see if there are any of the listed problem libraries:**

| | | | |
|----------------------------|--------------------|-----------------------|----------|
| LaunchWinApp.exe | 9/15/2021 11:41 AM | Application | 44 KB |
| Icphrase.tbl | 12/7/2019 1:09 AM | TBL File | 207 KB |
| Icptr.tbl | 12/7/2019 1:09 AM | TBL File | 24 KB |
| LegacyNetUX.dll | 3/16/2021 11:42 AM | Application extens... | 68 KB |
| LegacyNetUXHost.exe | 10/12/2021 1:38 PM | Application | 238 KB |
| LegacySystemSettings.dll | 3/16/2021 11:42 AM | Application extens... | 68 KB |
| Ifsvc.dll | 12/7/2019 1:08 AM | Application extens... | 48 KB |
| libcrypto.dll | 5/15/2021 7:21 PM | Application extens... | 1,648 KB |
| libmfxhw64.dll | 4/22/2021 8:58 PM | Application extens... | 303 KB |
| license.rtf | 3/18/2019 11:20 PM | Rich Text Format | 136 KB |
| LicenseManager.dll | 4/19/2021 12:00 PM | Application extens... | 1,045 KB |
| LicenseManagerApi.dll | 4/19/2021 12:00 PM | Application extens... | 95 KB |
| LicenseManagerShellExt.exe | 3/16/2021 11:42 AM | Application | 47 KB |
| LicenseManagerSvc.dll | 3/16/2021 11:42 AM | Application extens... | 50 KB |
| LicensingCSP.dll | 4/19/2021 12:00 PM | Application extens... | 146 KB |
| licensinadiaa.exe | 10/12/2021 1:38 PM | Application | 387 KB |

- **Ran this command**

```
Microsoft Windows [Version 10.0.19043.1288]
(c) Microsoft Corporation. All rights reserved.

C:\Users\Daniel Flanigan>dir /s "%awp_root201%\*cadoe_core*"
The system cannot find the file specified.

C:\Users\Daniel Flanigan>"C:\*cadoe_core*"
"C:\*cadoe_core*" is not recognized as an internal or external command,
operable program or batch file.

C:\Users\Daniel Flanigan>
```

- **Tried setting the processes to zero – but it seems to always just default back to 1**